



Magic Wash

1) Product character

Magic Wash is a highly effective compound made by surfactant and bio enzyme, its special enzyme powder system can destroy and eliminate chromophore in unreacted/hydrolyzed dye but no influence on dyes which has combined with fiber via covalent bond. The product is used for soaping after reactive dyeing, has excellent remove flooding color effects, improve wet rubbing fastness of dyed fabrics significantly, reduce middle or dark color raffinate chromaticity, decrease washing times, reduce washing cost and washing time, and have chelation effects to calcium, magnesium and other metal ions in hard water.

2) Properties

Appearance	:	White granules
Solubility	:	Soluble in water
Environmental protection property	:	Without any APEO, AOX and other prohibited ingredients.

3) Usage instruction

- 3.1) Mix white powder form **Magic Wash** with cold water to soaping enzyme aqueous solution according to 1:10 ratio
- 3.2) Dropt raffinate after dyeing, and wash with warm water
- 3.3) Heated to 80°C after changing water, soaping with **Magic Wash** aqueous solution for 20 minutes
- 3.4) Drain off the water → washing, be soft
- 3.5) **Dosage:** 3g/l – 4g/l (**Magic Wash** aqueous solution after dilution)
 - 3.5.1) **Bath ratio** : 1:10 – 1:15
 - 3.5.2) **Process time** : 20 minutes
 - 3.5.3) **Bath temperature** : > 90°C

4) Main function and characteristics

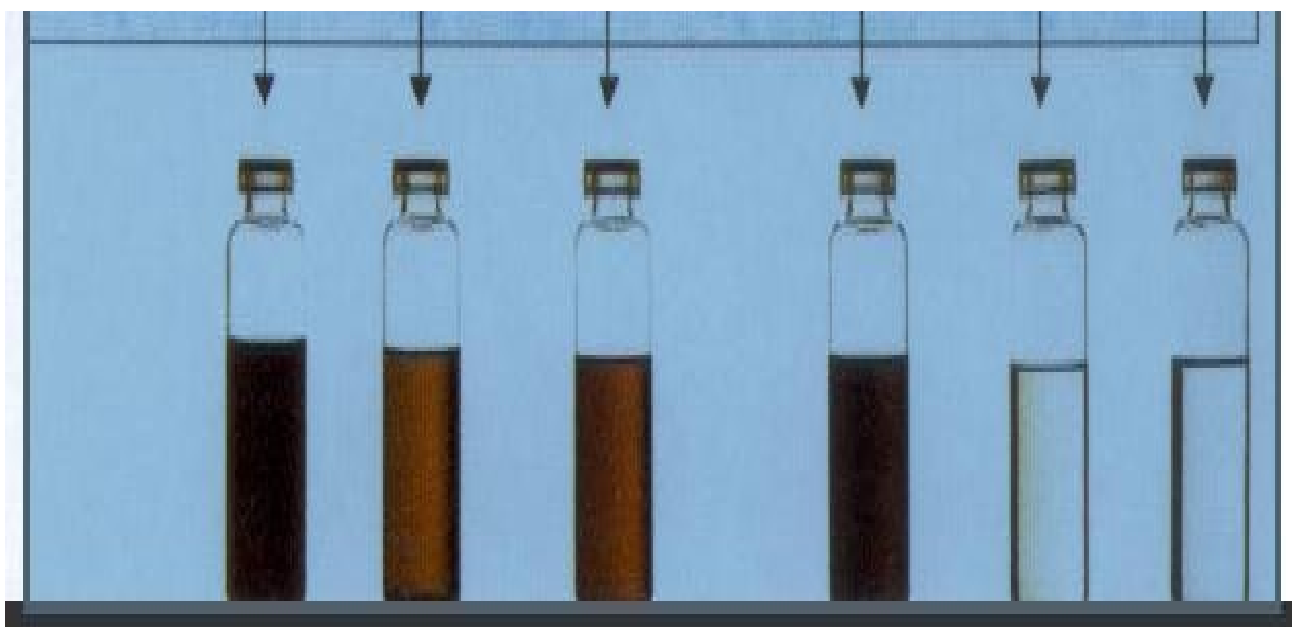
- 4.1) Have decomposing and achromatic effects on hydrolysed dyes in solution and dyes in fiber surface which is without fixation, but no influence on dyes which has combined with fiber via covalent bond, so that it has no influence for color depth
- 4.2) A dyed fabric has more excellent washing fastness, perspiration fastness, rubbing fastness and so on
- 4.3) Can shorten washing soaping process after reactive dyeing; save water, save energy and save time



- 4.4) Can improve soaping effects effectively, and without foam when used
- 4.5) A dosage form, simple technology, easy to operate
- 4.6) Biological agent, more environmental protection (reduce colored water efficient), more safe when used.

Magic Wash process compared with traditional soaping agent process (an example with black color)

		Traditional soaping agent	Magic Wash
Fastness	Dry rubbing	3 - 4	4
	Wet rubbing	3	3 - 4
	Soaping	3 - 4	4



Use traditional soaping agent

Use Magic Wash raffinate

5) Safe use and handling

Good hygienic and industrial practices should be followed and, when employed as recommended, **Magic Wash** will not present any hazard. However, prolonged skin contact with the neat product should be avoided and any splashes on the skin should be washed off with water.

The information herein is, to the best of our knowledge, correct and complete. It is based not only on the work in our laboratory but also on the reported results of other workers in this field. It is offered without guarantee of specific properties and no patent liability is assumed. No liability can be accepted for any loss, injury or damage resulting from its use.